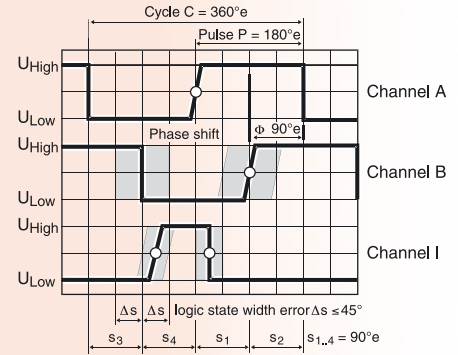
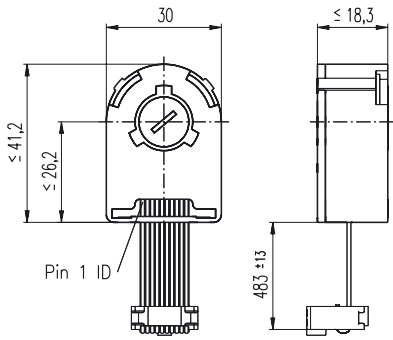


Encoder HEDL 5540, 500 - 1000 CPT, 3 Channels, with Line Driver RS 422



- Stock program
- Standard program
- Special program (on request!)

Order Number

110512	110514	110516
--------	--------	--------

Type	110512	110514	110516
Counts per turn	500	500	500
Number of channels	3	3	3
Max. operating frequency (kHz)	100	100	100
Shaft diameter (mm)	3	4	6



Combination						Overall length [mm]	• see: + Gearhead
+ Motor	Page	+ Gearhead	Page	+ Brake	Page		
EC-max 30, 40 W	173						62.6
EC-max 30, 40 W	173	GP 32, 1 - 6 Nm	221				•
EC-max 30, 40 W	173			AB 20	278		94.7
EC-max 30, 40 W	173	GP 32, 1 - 6 Nm	221	AB 20	278		•
EC-max 30, 60 W	174						84.6
EC-max 30, 60 W	174	GP 42, 3 - 15 Nm	225				•
EC-max 30, 60 W	174			AB 20	278		116.7
EC-max 30, 60 W	174	GP 42, 3 - 15 Nm	225	AB 20	278		•
EC-power 30	175						67.6
EC-power 30	175	GP 42, 3 - 15 Nm	225				•
EC-power 30	175			AB 20	278		79.1
EC-power 30	175	GP 42, 3 - 15 Nm	225	AB 20	278		•
EC-power 30	176						84.6
EC-power 30	176	GP 42, 3 - 15 Nm	225				•
EC-power 30	176			AB 20	278		96.1
EC-power 30	176	GP 42, 3 - 15 Nm	225	AB 20	278		•
EC-max 40, 70 W	177						81.4
EC-max 40, 70 W	177	GP 42, 3 - 15 Nm	225				•
EC-max 40, 70 W	177			AB 28	281		121.4
EC-max 40, 70 W	177	GP 42, 3 - 15 Nm	225	AB 28	281		•
EC-max 40, 120 W	178						111.4
EC-max 40, 120 W	178	GP 52, 4 - 30 Nm	228				•
EC-max 40, 120 W	178			AB 28	281		151.4
EC-max 40, 120 W	178	GP 52, 4 - 30 Nm	228	AB 28	281		•

Technical Data	
Supply voltage	5 V ± 10 %
Output signal	EIA Standard RS 422
drivers used:	DS26LS31
Phase shift Φ (nominal)	90°e
Logic state width s	min. 45°e
Signal rise time (typical at $C_L = 25$ pF, $R_L = 2.7$ k Ω , 25°C)	180 ns
Signal fall time (typical at $C_L = 25$ pF, $R_L = 2.7$ k Ω , 25°C)	40 ns
Index pulse width (nominal)	90°e
Operating temperature range	0 ... +70°C
Moment of inertia of code wheel	≤ 0.6 gcm ²
Max. angular acceleration	250 000 rad s ⁻²
Output current per channel	min. -20 mA, max. 20 mA
Option	1000 counts per turn, 2 channel

Pin Allocation	
	<ul style="list-style-type: none"> 1 N.C. 2 V_{CC} 3 GND 4 N.C. 5 Channel \bar{A} 6 Channel A 7 Channel \bar{B} 8 Channel B 9 Channel \bar{I} (Index) 10 Channel I (Index)
	Pin type Berg 246770 flat band cable AWG 28

